

# Word of the Day

## Autumn Term 2024

Week 6 – 7th October 2024



*'Words unlock the doors to a world of understanding...'*

# This Week's Words

Grasshopper

**grumble**

**frown**

**festival**

**elderly**

**gusty**

Shinobi

**confess**

**complain**

**opposite**

**private**

**route**



**VOCABULARY NINJA**

# Grasshopper (Tier 1)

**grumble**

**frown**

**festival**

**elderly**

**gusty**



**VOCABULARY NINJA**

# Shinobi (Tier 2)

**confess**

**complain**

**opposite**

**private**

**route**



**VOCABULARY NINJA**



# Grasshopper Word of the Day

Word of the Day:

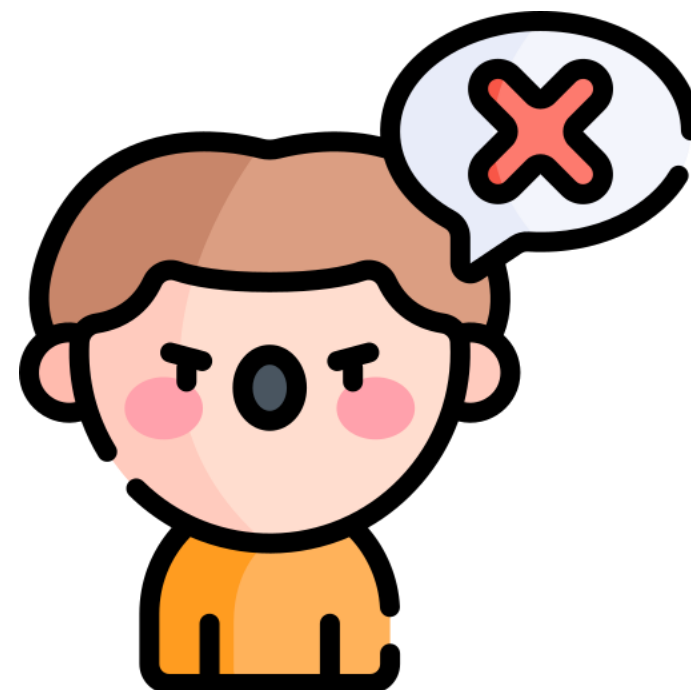
grumble  
(grum-ble)

Word Class  
(verb / noun)

Pronunciation / Syllables

Definition:

If someone grumbles,  
they complain about something in  
a bad-tempered way.



The class began to **grumble** when play time ended.

Synonym:

moan

gripe

Antonym:

compliment

praise

Prefix / Suffix:

-ed

-r

Rhyme:

tumble

stumble

Link Word:

quietly

reluctantly



# Grasshopper Word of the Day

Word of the Day:

Pronunciation / Syllables

**frown**  
(frown)

Word Class  
(verb / noun)

## Definition:

When someone frowns, their eyebrows become drawn together, because they are annoyed, worried, or puzzled, or because they are concentrating.



Ms Tar began to **frown** when the classroom was noisy.

Synonym:

glare  
grimace

Antonym:

grin  
smile

Prefix / Suffix:

-ing  
-s

Rhyme:

down  
brown

Link Word:

deep  
slightly



# Grasshopper Word of the Day

Word of the Day:

Pronunciation / Syllables

**festival**  
(fes-ti-val)

Word Class  
(noun)

Definition:

A festival is an organised series of events such as musical concerts or drama productions.



The class created decorations for the school's festival.

Synonym:

fair

gala

Antonym:

Prefix / Suffix:

-s

Rhyme:

Link Word:

colourful

annual





# Grasshopper Word of the Day

Word of the Day:

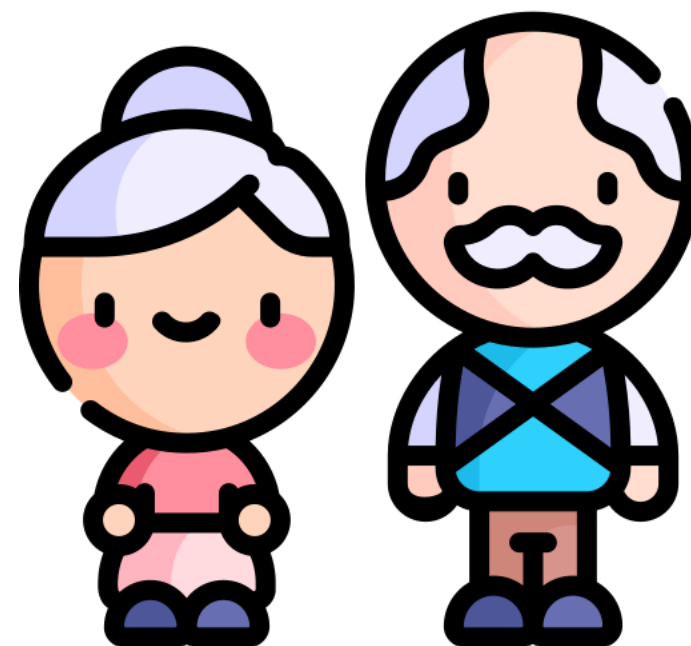
Pronunciation / Syllables

elderly  
(eld-er-ly)

Word Class  
(adjective / noun)

Definition:

You use elderly as a polite way of saying that someone is old.



The class wrote letters to the **elderly** residents.

Synonym:

aged  
retired

Antonym:

new  
young

Prefix / Suffix:

Rhyme:

Link Word:

very  
assist





# Grasshopper Word of the Day

Word of the Day:

Pronunciation / Syllables

**gusty**  
(gust-y)

Word Class  
(adjective)

Definition:

Gusty winds are  
very strong and irregular.



The weather had become **gusty**.

Synonym:

breezy

stormy

Antonym:

calm

still

Prefix / Suffix:

Rhyme:

dusty

rusty

Link Word:

fiercely

suddenly



# Shinobi Word of the Day

Word of the Day:

**confess**  
(con-fess)

Word Class  
(verb)

Pronunciation / Syllables

## Definition:

If someone confesses to doing something, usually something wrong, they admit that they did it.



Jerry wanted to **confess** he didn't do his homework.

Synonym:

reveal

profess

Antonym:

conceal

hide

Prefix / Suffix:

-ion

-ed

Rhyme:

progress

address

Link Word:

truthfully

reluctantly



# Shinobi Word of the Day

Word of the Day:

**complain**  
(com-plain)

Word Class  
(verb)

Pronunciation / Syllables

Definition:

If you complain about a situation, you say that you are not satisfied with it.



The class began **complain** about getting homework.

Synonym:

moan

object

Antonym:

accept

praise

Prefix / Suffix:

-t

-ing

Rhyme:

again

remain

Link Word:

loudly

constantly



# Shinobi Word of the Day

Word of the Day:

Pronunciation / Syllables

**opposite**  
(op-po-site)

Word Class  
(adjective)

Definition:

If one thing is opposite another, it is on the other side of a space from it.



The class sat **opposite** each other for the activity.

Synonym:

differing

reversed

Antonym:

agreeing

similar

Prefix / Suffix:

-s

-ly

Rhyme:

Link Word:

direct

complete



# Shinobi Word of the Day

Word of the Day:

Pronunciation / Syllables

private  
(pri-vate)

Word Class  
(adjective)

Definition:

Your private thoughts or feelings are ones that you do not talk about to other people.



Dawn kept her test marks **private**.

Synonym:

confidential

secret

Antonym:

common

known

Prefix / Suffix:

semi-

-ly

Rhyme:

Link Word:

discreetly

exclusively



# Shinobi Word of the Day

Word Class  
(noun)

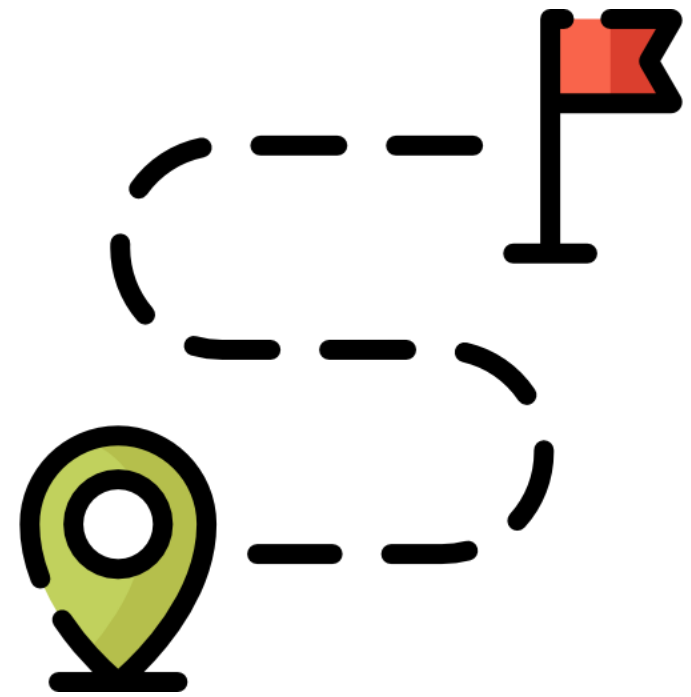
Word of the Day:

Pronunciation / Syllables

route  
(route)

Definition:

A route is a way from one place to another.



Mrs Oldfield showed the class the **route** to the library.

Synonym:

passage

trail

Antonym:

Prefix / Suffix

re-

-s

Rhyme:

fruit

suit

Link Word:

direct

scenic

# Vocabulary Laboratory



Describe / Definition:

Use it in a sentence:

**Focus Word** (write below):

**Word Class:**

**Synonyms:**

(words with same / similar meaning)

**Antonyms:**

(words with opposite meaning)

**Draw your sentence:**

**Rhymes:**

(words that sound the same)

**Link Words:**

(Example: football = pitch, team, player)



# Vocabulary Visualiser

Draw the  
**Grasshopper** words  
and bring them to life.



Word: grumble

Word: elderly

Word: frown

Word: gusty



# Vocabulary Visualiser

Draw the **Shinobi** words and bring them to life.



Word: confess

Word: opposite

Word: complain

Word: route



# Matching Meanings

Draw lines from the **Grasshopper** words to their definitions.



## Grasshopper Word

## Grasshopper Definitions

grumble

A \*\*\* is an organized series of events such as musical concerts or drama productions.



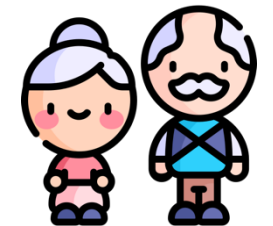
frown

If someone \*\*\*, they complain about something in a bad-tempered way.



festival

You use \*\*\* as a polite way of saying that someone is old.



elderly

\*\*\* winds are very strong and irregular.



gusty

When someone \*\*\*, their eyebrows become drawn together, because they are annoyed, worried, or puzzled, or because they are concentrating.



# Matching Meanings

Draw lines from the **Shinobi** words to their definitions.



## Shinobi Word

## Shinobi Definitions

confess

If one thing is \*\*\* another, it is on the other side of a space from it.



complain

If you \*\*\* about a situation, you say that you are not satisfied with it.



opposite

Your \*\*\* thoughts or feelings are ones that you do not talk about to other people.



private

A \*\*\* is a way from one place to another.



route

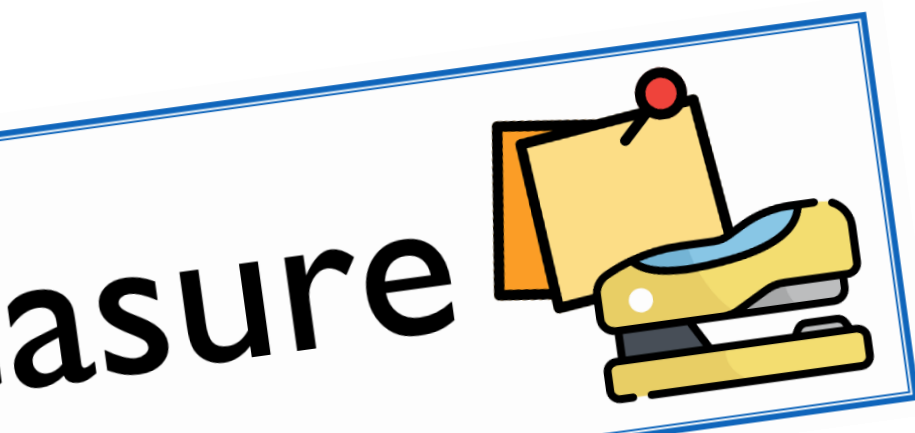
If someone \*\*\* to doing something, usually something wrong, they admit that they did it.





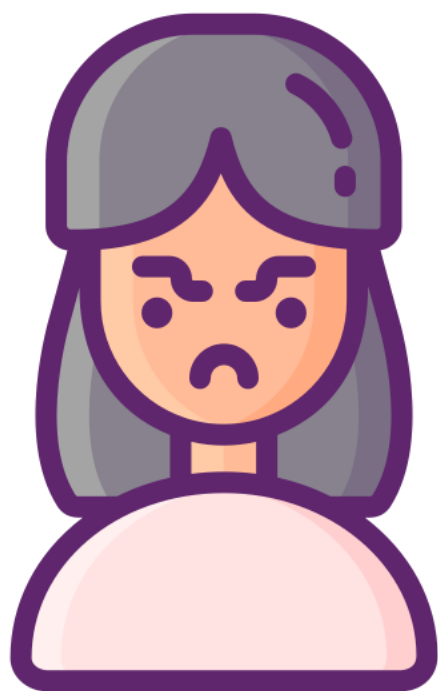
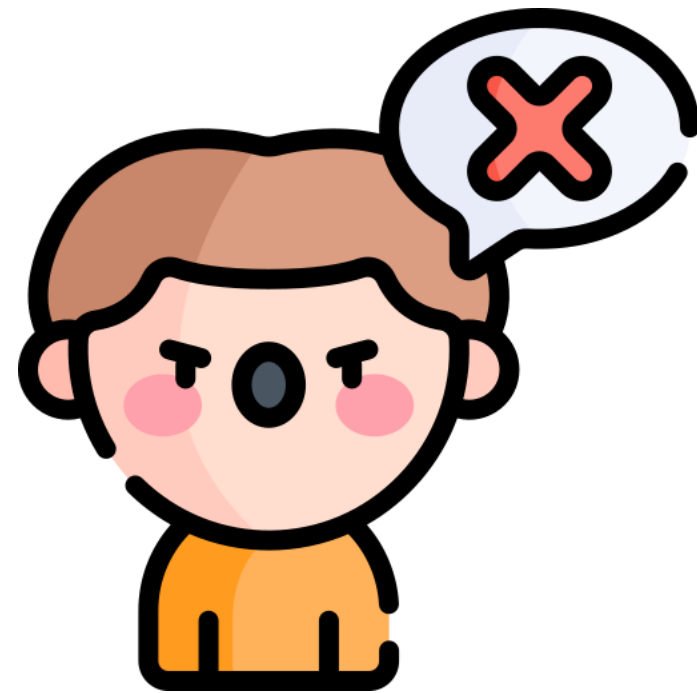
# Display Slips

The following slides are for classroom display. As you teach each Word of the Day, words can be displayed in the classroom to enable pupils to use the taught vocabulary in an independent manner.





# grumble

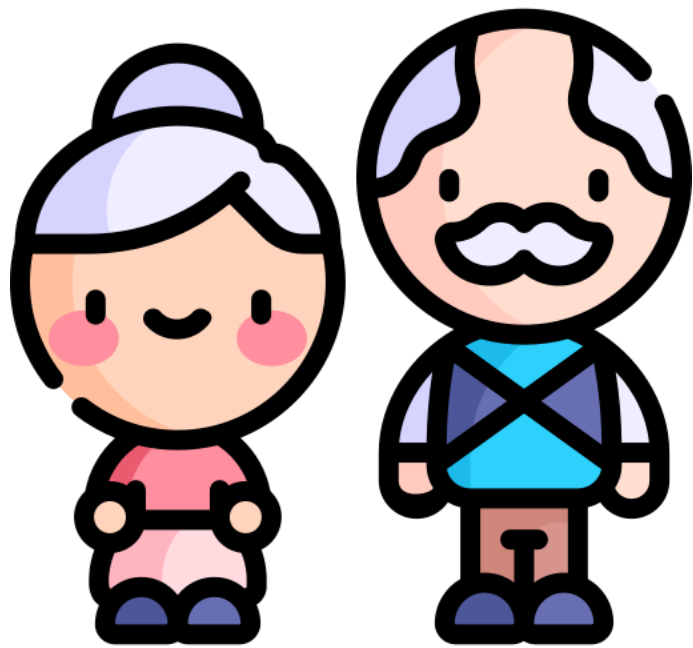


# frown





# festival



# elderly







# gusty



# confess





# complain

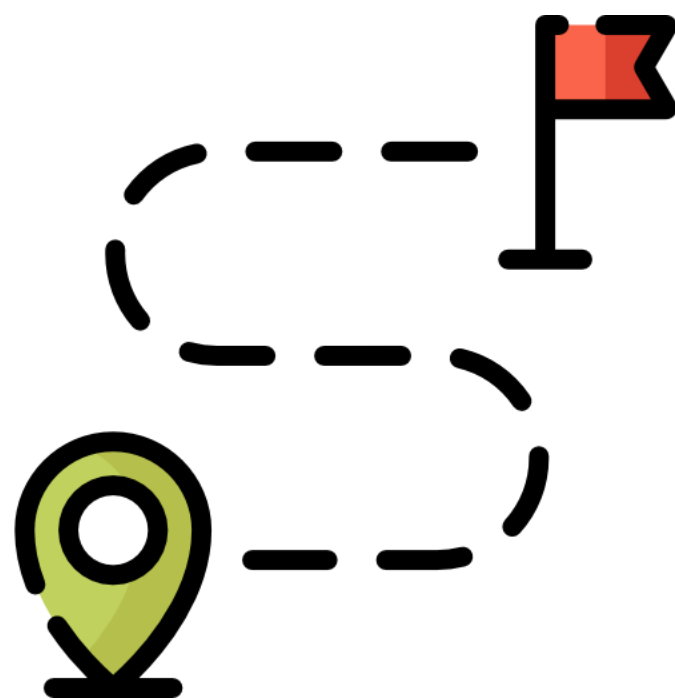


# opposite





# private



# route





# Font Variation

The following display slips contain the same words, but have a more regular font, which have a more regular formation of 'a' and 'g'. Futura is the name of the font.




worried



opini

asure

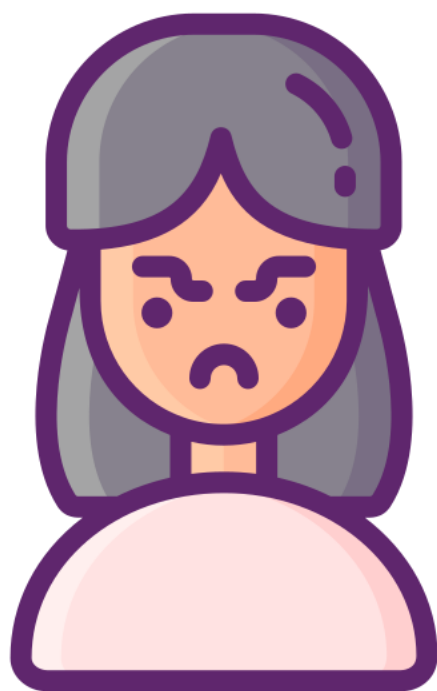
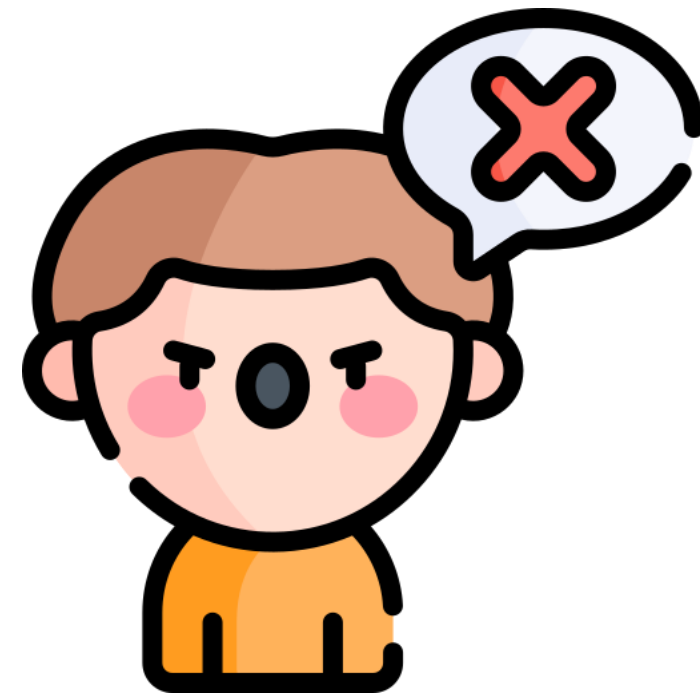


dia





grumble

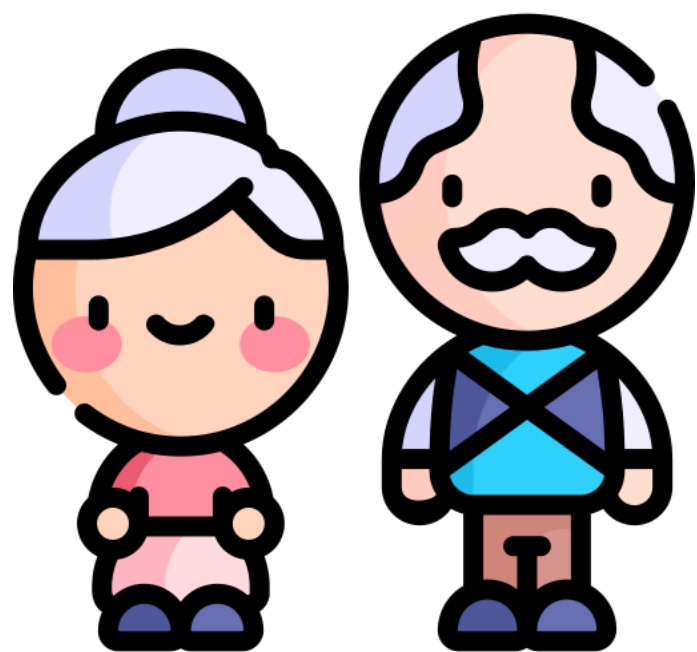


frown





# festival

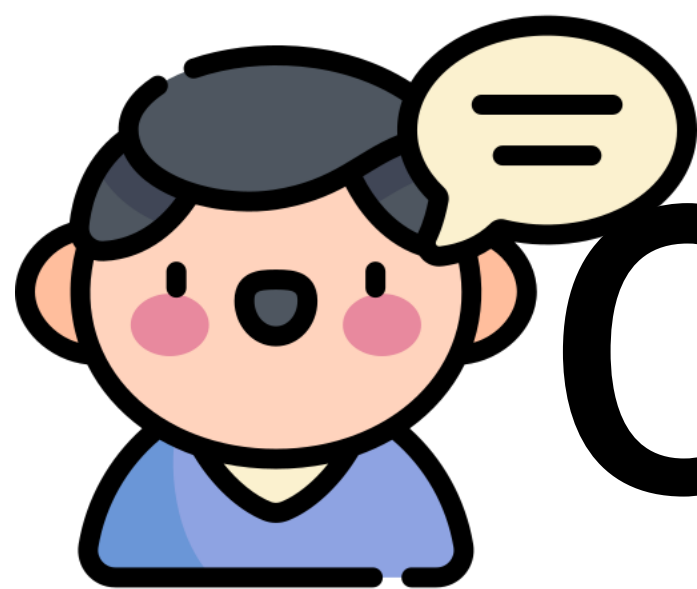


# elderly





# gusty



# confess







# complain

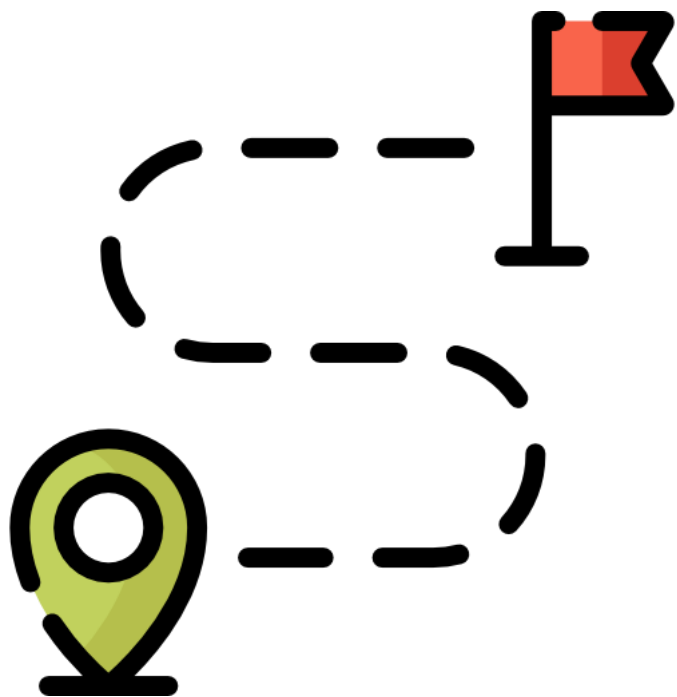


# opposite





# private



# route

